

**All-American Baseball Center**  
**Indoor Baseball Rules**

**Batting:**

1. All batters start with a 1/1 count
2. Three foul balls results in an out.
3. Batting team can score a maximum of 3 runs per inning.

**Automatic Hits:**

1. Singles: Any ground ball or line drive that hits the **red padded wall** **without being touched by an infielder first** results in an automatic single with each base runner advancing one base. (Figure A)
2. Doubles: Any fly ball that contacts the **chain link fence** just above the blue padded wall is an automatic double. The ball must touch the fence first. (figure A)
3. Triples: Any fly ball that contacts the **cargo net below the white line and above the chain link fence** is an automatic triple. (Figure A)
4. Homerun: Any fly ball that hits inside the yellow home run square on the cargo net will be considered an automatic homerun. Any ball hitting the yellow outline of the homerun square will also be considered a homerun. (Figure B)

**Groundballs:**

1. Any ball that contacts the grass first will be considered a groundball regardless of where the ball ricochets and hits afterwards.
2. Any fly ball that strikes the **blue padded wall** is considered a groundball. The runner must beat the infielders throw to first base.
3. Any fair ball that contacts the infielder before hitting another object in the building will be considered a groundball.

**Flyballs:**

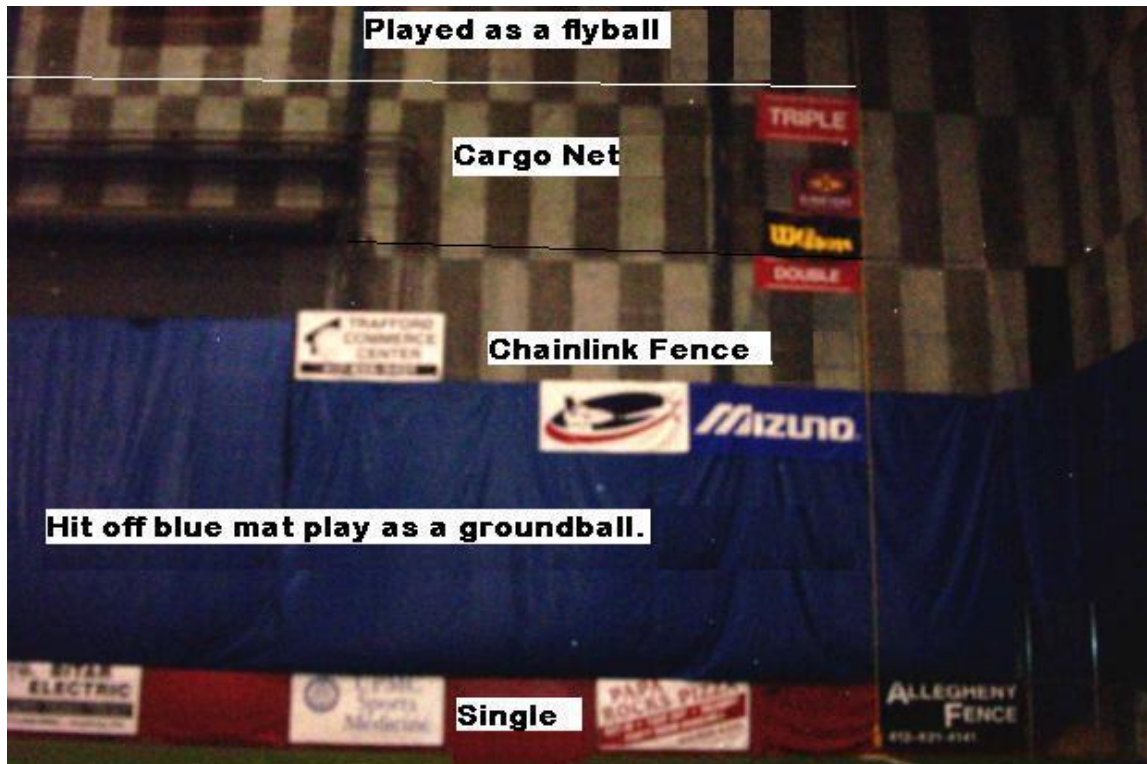
1. Any fly ball that contacts the cargo net above the triple line can be caught by the infielder for a fly ball out. (Figure A)
2. Any ball hit into the rafters of the ceiling is an **automatic out**. **However, the runners may advance at their own risk.** This would be similar to how the runners can advance at their own risk on an infield fly rule.

**No Catch Rule:**

1. Any ball that hits an infielders glove and then ricochets off a structure in the building (cargo net, mat, fence, etc...) can not be caught off the ricochet.
2. Any fly ball that hits the cargo net in foul territory **can not** be caught for a fly ball out. This includes the cargo net along the first base and third base foul lines as well as the cargo net behind the catcher.

(Next Page)

**(Figure A)**



Played as a flyball

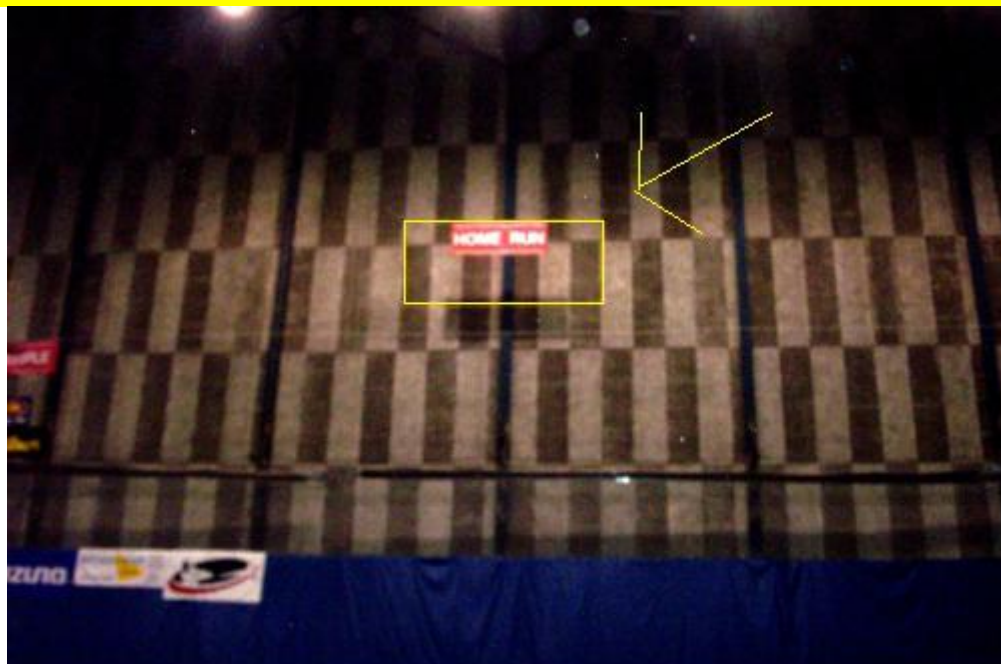
Cargo Net

Chainlink Fence

Hit off blue mat play as a groundball.

Single

**Groundball:** Hit ball off the blue mat & fielder can throw you out.  
**Single:** Hit ball off red mat without fielder touching it first.  
**Double:** Hit the ball off the chainlink fence above blue mat.  
**Triple:** Hit ball off the cargo net above fence & below white line.  
**Flyball:** Hit the ball onto the cargo net above white rope line & fielders can catch the ball for an out.



**Home Run Rule:**  
 Any ball hit inside the home run squard on the cargo net will be an automatic home run.

**(Figure B)**



Any flyball that hits the rafters is an automatic out. However, all runners may advance at their own risk much like the runners advance at their own risk on the "Infield Fly Rule".